



**Putzmeister**



# MXR 35-4 stationary boom

Top assembly and operation performance

# Space gain and time saving at the highest level

## Innovative and fully developed through to the boom tip

The MXR 35-4 stationary boom from Putzmeister combines flexibility, operator convenience and surprisingly low operating costs. This is down to the innovative hinge design with quick disconnection system, which ensures simple and fast assembly and dismantling.

### Top dog in assembly, handling, service

Sophisticated details such as the illuminated boom tip, local controls and working platform, the safe and good access to all assembly, operating and service points, dedicated stowage space for tool and crane gear, innovative Ergonic® 2.0 radio remote control – all this and more make the MXR 35-4 a popular co-worker.



## Boom pedestal – it all revolves around safety and efficiency

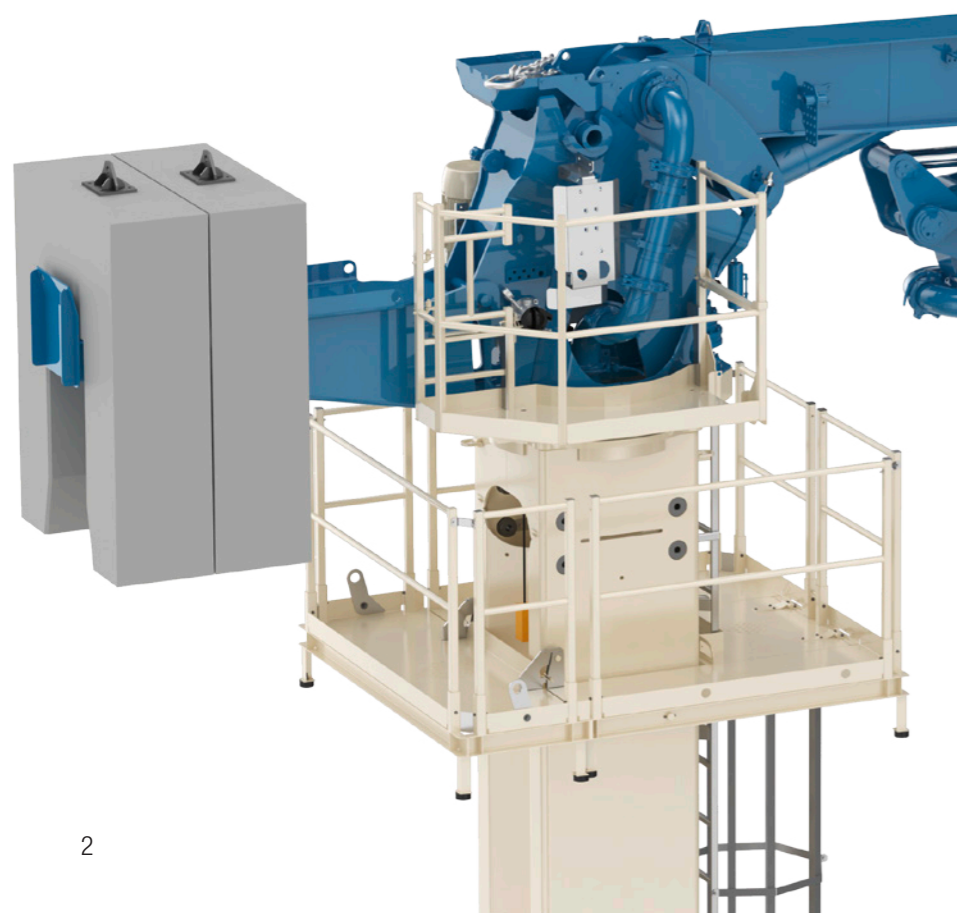
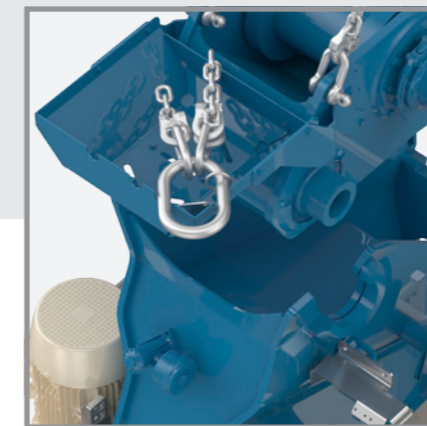
The boom pedestal of the MXR 35-4 has powerful and compact planetary gearing, which is convincingly efficient and eco-friendly. All rotating head components - including the electrical control cabinet and oil tank - rotate along and are within the machinist's view at all times. So stationary obstacles within the operating range never present a hazard.

### Excellent hydraulics for optimum handling

The mast conveniently responds quickly to the machinist's joystick commands, and the boom is cushioned to ensure smooth movements. The horizontally-installed oil filter also draws pleasant attention during, or even before, the surprisingly simple and clean replacement.

## Platform for safe, time-saving operations

The right place for everything. Both the large and even the small working platforms offer sufficient freedom of movement for service and maintenance, as well as optimum access to all operating and assembly points. These platforms are designed to allow the placing boom to rotate around 365°, even with a negative inclination of minus 2°.



## MX quick disconnection system – how installation is done today

The innovative hinge technology with MX quick disconnection system ensures simple and time-saving assembly of the MXR 35-4, because the boom detaches easily from its pedestal. This is inserted into the boom pedestal by the job site crane and securely fastened from the working platform with two clamping screws.

### Working optimally balanced

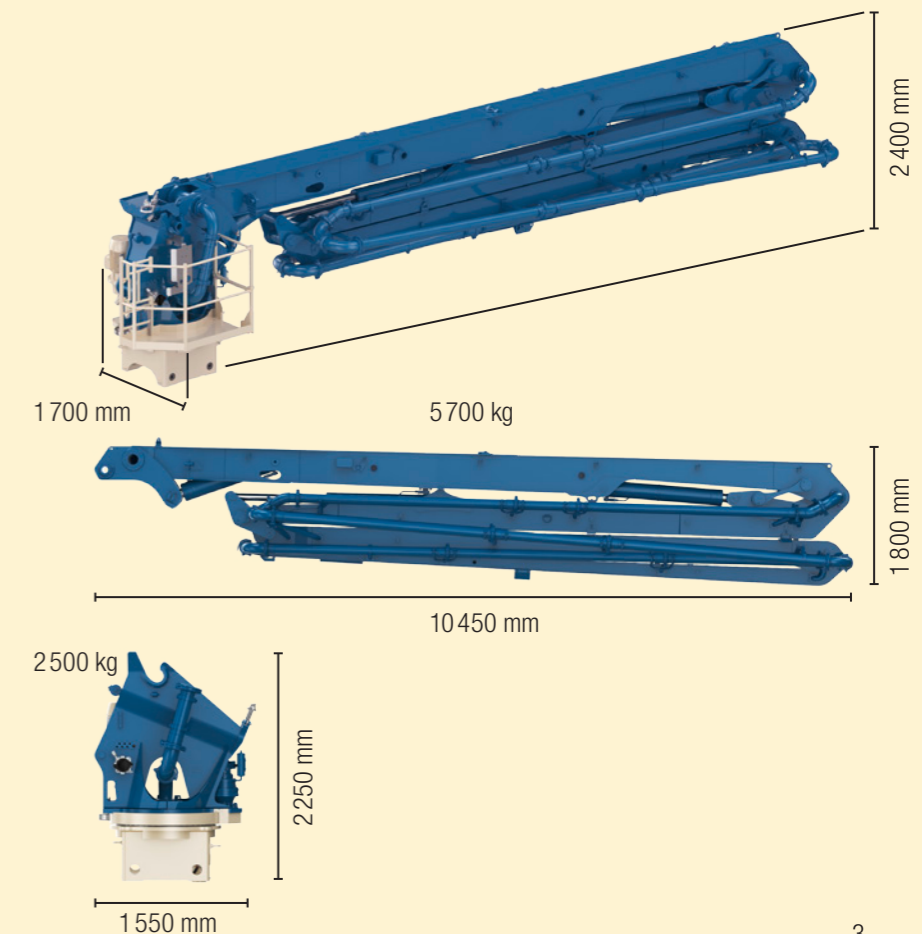
The MXR 35-4 works from a free-standing position up to 19.5 m without any counterweight. To meet higher requirements, a counterweight can be mounted to extend the free-standing height. The counterweight carrier has a compact design, which effectively prevents collision during swivelling movements.

## FFS Ergonic® 2.0 – the finest operation

The cleverly designed Ergonic® 2.0 is extremely lightweight and a joy to hold. The high-resolution colour display makes readings extremely legible. A Li-ion, long-life rechargeable battery guarantees sufficient energy. Cable operation is also possible. Adverse conditions, despite the encapsulated electronics. The status displays are provided with symbols and back-lit via LED for poor lighting conditions.

### More possibilities, more convenience

The swivel range can be limited via the "teach function" and changeover from climbing to boom function can now be done remotely – that's Work 2.0.



# The MXR 35-4 at a glance

## All the benefits at a glance

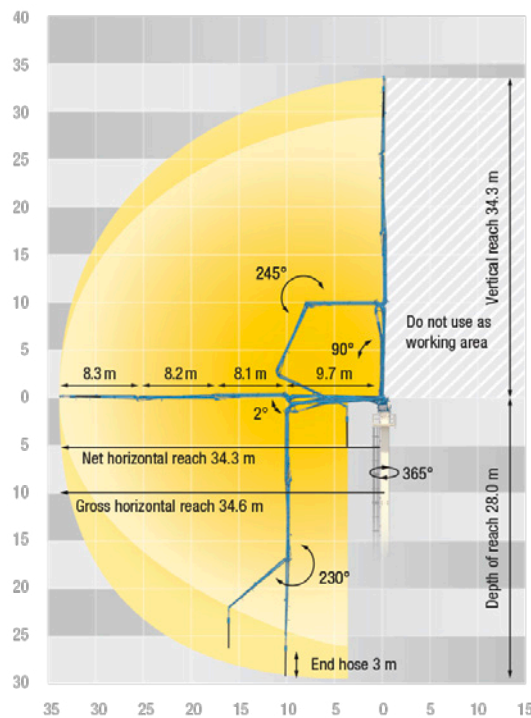
- Output line diameter 125 mm
- Convenient operation via FFS Ergonic® 2.0
- MX quick disconnection point for simple and fast assembly and dismantling of the boom
- Suitable for the RS 850 stationary placing boom from Putzmeister
- Good access to all assembly and operating points

## More options, more convenience

- End hose squeeze valve (EQV)
- Ergonic® Boom Control (EBC) for vibrating damping and single-handed control
- Central lubrication for maximum service life without additional effort
- Oil tank heating
- Headlight on the boom tip

## Technical data

<b>Number of arms</b>	4
<b>Reach</b>	34.6 m gross
<b>Depth of reach</b>	28.0 m
<b>Free-standing height</b>	19.5 m
<b>End hose length</b>	3 m
<b>Delivery lines</b>	DN 125
<b>Swivel range circle</b>	365°
<b>Weight total arm assembly</b>	5.7 t
<b>Weight of boom pedestal</b>	2.5 t



## Putzmeister Concrete Pumps GmbH

Max-Eyth-Straße 10 · 72631 Aichtal  
Postfach 2152 · 72629 Aichtal  
Tel. +49 (7127) 599-0 · Fax +49 (7127) 599-520  
pmw@pmw.de · www.putzmeister.com

